

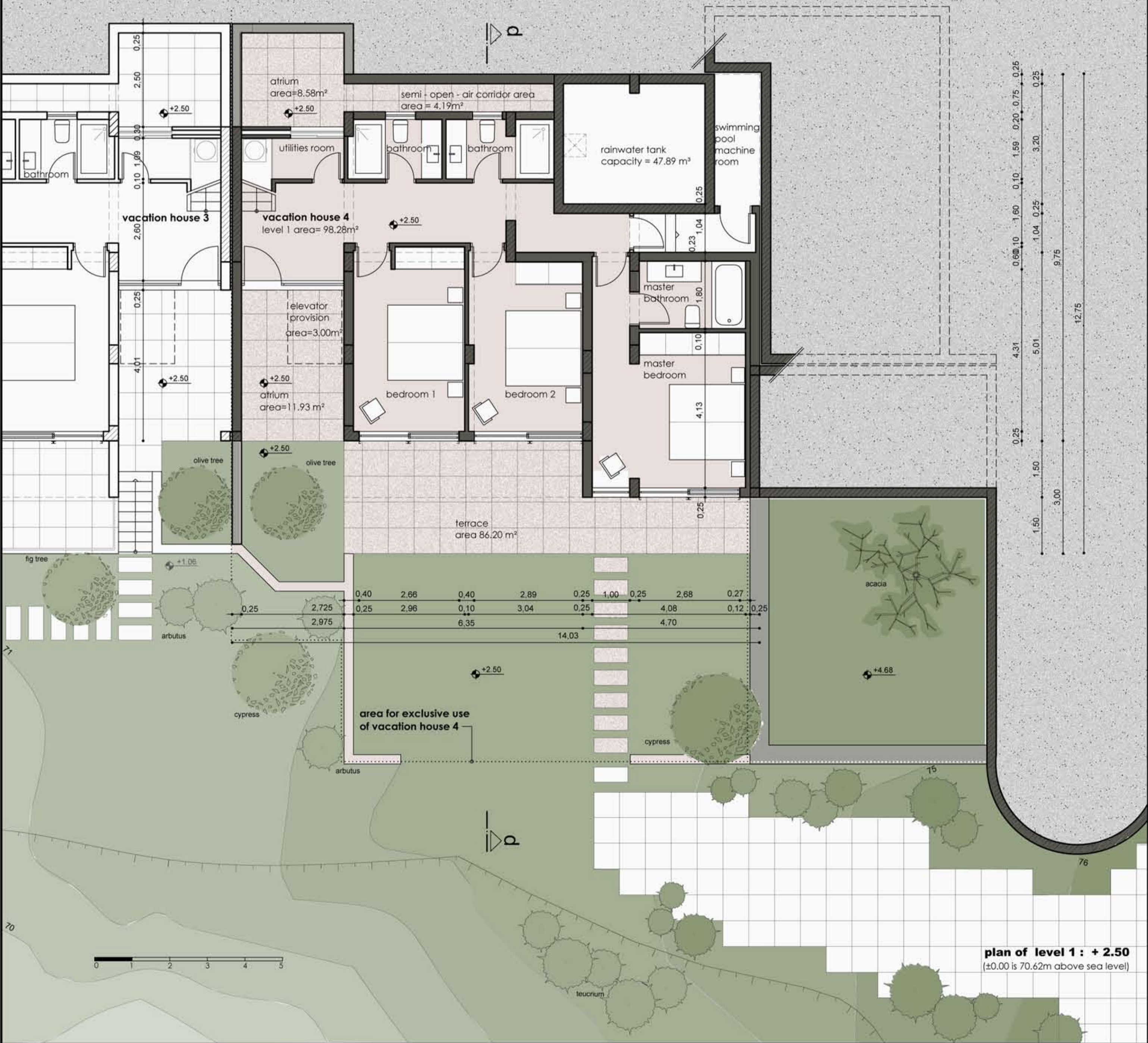
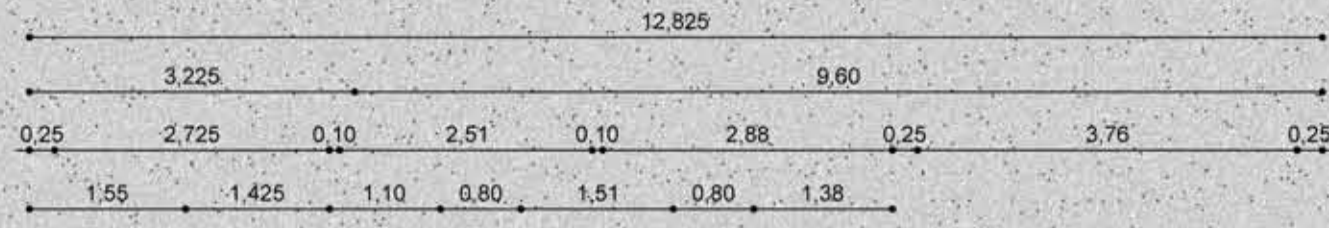
plan of level 2 (entry level): + 5.68
 (±0.00 is 70.62m above sea level)

development: **D. Simos**
 11 Pentelis st, Kifissia, Athens, 14562 - T: (+30) 2112215508, (+30) 6944474747 - dsimos@otenet.gr - www.oiki.gr

architects: **E. Simou - Kamari**
 & collaborating architects

plan of vacation house 4

4 VACATION HOUSES IN POUNTA, SKIATHOS



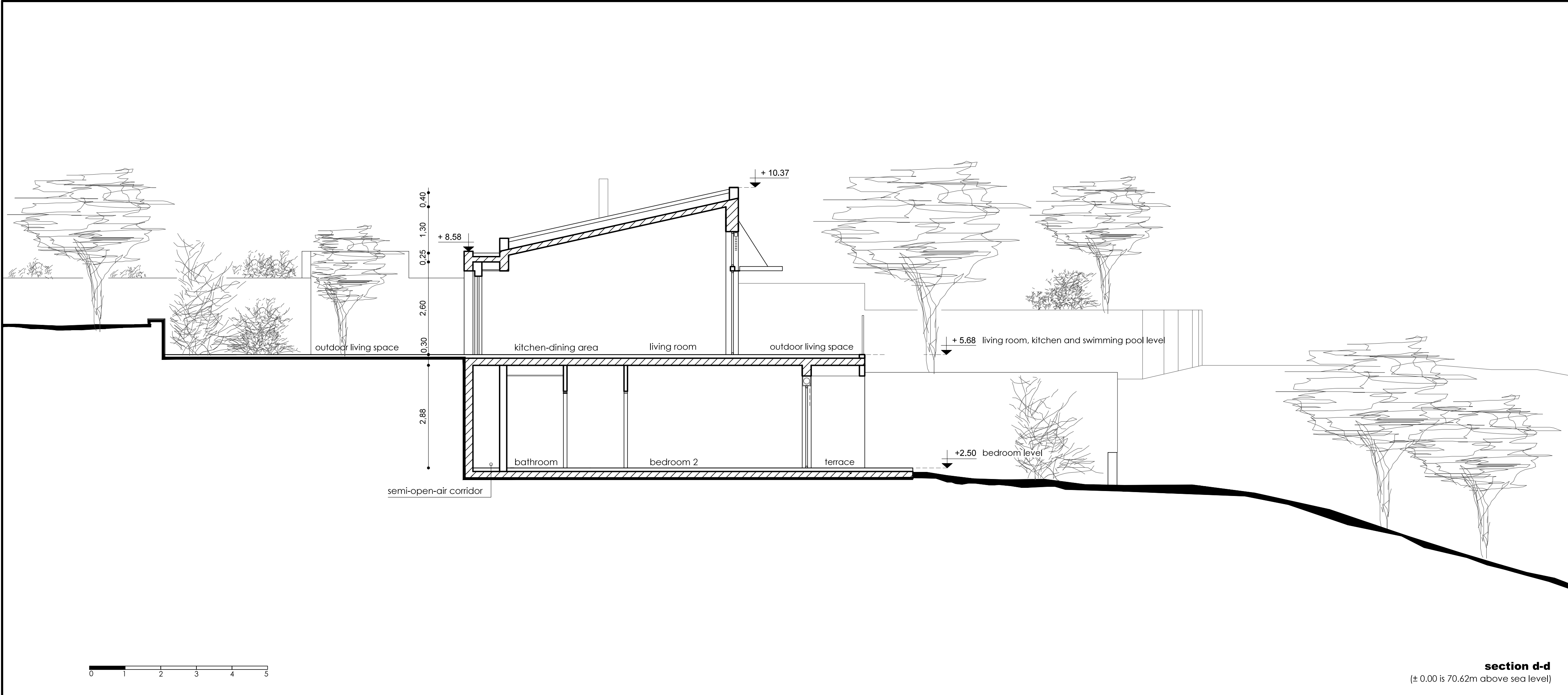
plan of level 1 : + 2.50
(±0.00 is 70.62m above sea level)

development: **D. Simos**
11 Pentelis st, Kifissia, Athens, 14562 - T: (+30) 2112215508, (+30) 6944474747 - dsimos@otenet.gr - www.oiki.gr

plan of vacation house 4

architects: **E. Simou - Kamari**
& collaborating architects

4 VACATION HOUSES IN POUNTA , SKIATHOS



section d-d

(± 0.00 is 70.62m above sea level)

development: **D. Simos**
 11 Pentelis st, Kifissia, Athens, 14562 - T: (+30) 2112215508, (+30) 6944474747 - dsimos@otenet.gr - www.oiki.gr

vacation house 4

architects: **E. Simou - Kamari**
 & collaborating architects

4 VACATION HOUSES IN POUNTA, SKIATHOS